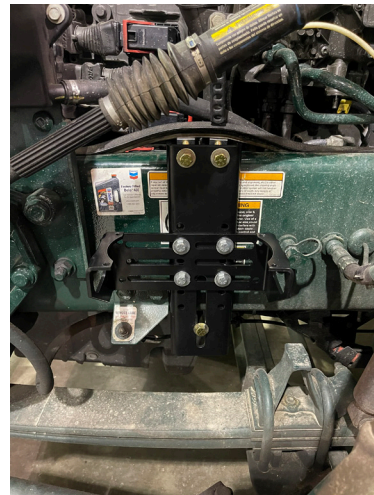


Mounting the AirDog®

CAUTION: Do NOT mount the AirDog® directly on the engine. Mounting the AirDog® directly on the engine will immediately VOID your AirDog® Warranty!

Using the supplied hardware, assemble the Flange Clamp Plate and 1-piece Mounting Bracket together for trial fitment to the truck frame. Here, you will use the 3/8"-16 x 1-1/4" bolts, with the appropriate nuts and washers, to assemble the two brackets. Do not fully tighten everything at this time. We want to test fit the mounting assembly and AirDog® pump to the frame, to confirm there is adequate clearance all around the system.

Hold the Mounting Bracket assembly to the frame, and hold in place with the Locking Clamps (2 on top, and 1 at the bottom) and 1/2"-13 Bolts with washers (shorter bolts on top, and longer bolt at bottom), as pictured :

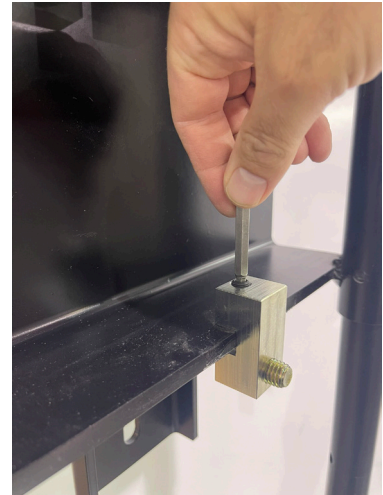


Place the AirDog® Fuel System on top of the mounting bracket set, and check for clearance around the pump. Make sure the pump will not interfere with the steering shaft above, any obstructions below, and make sure there is room for inlet and outlet fittings at either side of the AirDog® pump. The AirDog® 1-piece Bracket is slotted to allow side-to-side positioning, and the Flange Plate includes multiple sets of holes to provide vertical positioning options for the 1-piece Bracket.



PureFlow® Technologies, Inc.

When everything clears well, set the AirDog® pump aside, and tighten all mounting bracket hardware securely. We suggest beginning by tightening the set screws (3/16" hex socket head) in the Locking Clamps, which helps to hold the Clamps square to the frame.



Note:

If you find that the 1-piece AirDog® mounting bracket will not clear a bolt head, air or grease fitting, or another protrusion on the frame, please use the included 2" Spacers with 3/8"-16 x 3" bolts to step the 1-piece bracket away from the frame, as seen here:



Once the mounting brackets are secured, use the provided 1/4"-20 x 2" socket-head cap screws and appropriately sized split lock washers and hex nuts to loosely assemble the AirDog® onto the 1-piece Bracket. After mounting the AirDog® on the 1-piece Bracket, snug all fasteners to achieve a good relaxed fit.

